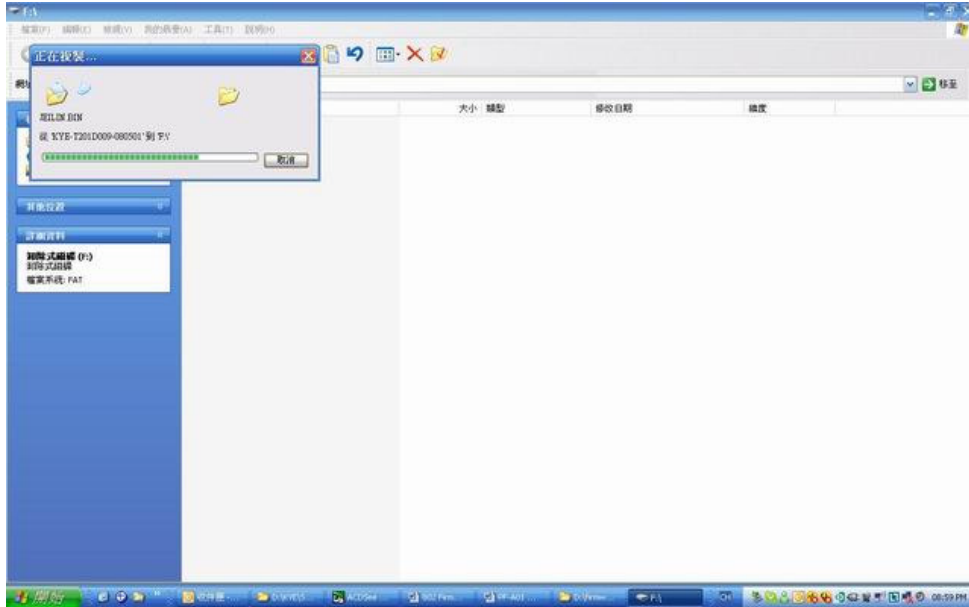


# Maintenance Technical Instruction

Customer		Document No.	
Product Name	PF-802	Issued Date	
		Part Number	
Description		Increase Format function	
Maintenance Procedure		Update Firmware	
Firmware Version		T201D009	
Spare Parts		No need	
Tooling Requirement		SD Card	

## Maintenance Procedure:

Step 1: Copy PF-802 firmware (T201D009) to SD card



Step 2: Turn on 802



### Step 3: Check Firmware version

Scroll to the left to choice tool icon then press “Enter” on the remote control.



Scroll up to “System Information” then press “Enter”



Check if the firmware is newest version” T201D009”

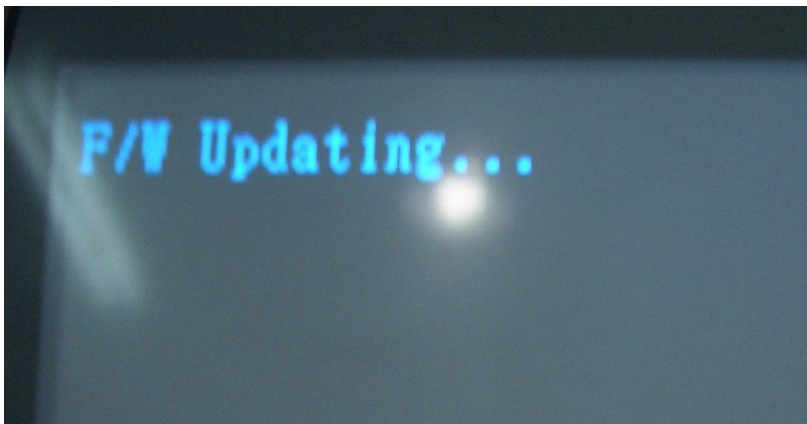


If version is T201D009, do not need to update firmware.

Step 4: Plug SD card with newest firmware (T201D009)



Step 5: Press “Enter” to update Firmware (About 2 minutes to finish it). F/W Updating...



### Step 6: Check Firmware version

When finish update, check if the firmware is T201D009 form System Information.



### Step 7: Format internal memory

Select "Tool" icon, scroll to "Format". Press "Enter" on the remote control.



Press "Enter" again to start format function



Format.....



When finish format, photoframe will return to the main menu



Update firmware completed.