

## **TRX 80**

Add a New Satellite  
Fine Tune a Satellite  
Delete a Satellite  
Parental Control  
Satellite Memory Realignment

Missing Odd or Even Channels  
Initial Set Up  
Main Functions List  
Missing Subscription Channels  
Troubleshooting Guide

### **Add a New Satellite**

1. Refer to a current Satellite Television Guide. Locate the satellite channel chart pages. This chart shows you where the satellites are and what channels are active. Move the dish to a programmed, known satellite nearest to the desired new satellite.
2. Turn off the Parental Control.
3. Put the receiver in Program Mode. Locate the Receiver Mode Switch on the receiver back panel. Refer to page 9 of your Owner's Manual. Move the switch to the "PROGRAM" position.
4. Turn on the Channel Scan.
  - a. Press FUNCTION.
  - b. Select No. 6, Channel Scan.
  - c. Select No. 1, ON.
  - d. Press ENTER.
5. Turn on the Auto Tuning.
  - a. Press FUNCTION.
  - b. Select No. 5, Auto Tuning.
  - c. Select No. 1, ON.
  - d. Press ENTER.
6. Use the EAST or WEST keys to line the dish up on the new satellite. The receiver scans the channels, alternating polarities, until it finds a strong signal.
7. Use the Channel up and down keys to view the channels on the new satellite.
8. Be sure this is the new satellite. Refer to your satellite chart for the channel listing.
9. Press C-SAT (Ku-SAT, if a Ku satellite).
10. Enter the 2-part alphanumeric name. If a letter is not available, use "O" for Other, or any unused name.
11. Press ENTER. The receiver automatically fine tunes the new satellite position. The "Auto-SKEW" and "Auto-ANT." messages flash on screen. The flashing stops when the process is complete.
12. Put the receiver back in Auto Mode. Locate the Receiver Mode Switch on the receiver back panel. Refer to page 9 of your Owner's Manual. Move the switch to the "AUTO" position.

### **Fine Tune a Satellite**

If you must use your East or West keys to obtain a clear picture on a certain satellite, every time you view that satellite, it is necessary to fine tune that satellite. Perform the following steps.

1. Move to the satellite in question.
2. Use the EAST and WEST keys to obtain the best possible picture.
3. Follow the steps in the **Add a New Satellite** procedure, as if you are entering this satellite as a new satellite.

If you must frequently fine tune a particular satellite, there may be problems with your out door unit. Contact your local satellite dealer/installer for assistance.

## **TRX 80**

### **Delete a Satellite**

As older satellites go out of service and new satellites are launched, you may need to delete old satellite names to make room for new ones. Perform the following steps.

1. Turn off the Parental Control.
2. Put the receiver in Program Mode. Locate the Receiver Mode Switch on the receiver back panel. Refer to page 9 of your Owner's Manual. Move the switch to the "PROGRAM" position. (It does not matter what satellite you are currently watching.)
3. Press C-SAT (or Ku-SAT). The on screen display reads "Satellite Memory".
4. Enter the 2-part alphanumeric name of the satellite to be canceled. Be sure you enter the name of the satellite you want to cancel.
5. Press CANCEL. The on screen display reads "Satellite Canceled."
6. Put the receiver back in Auto Mode. Locate the Receiver Mode Switch on the receiver back panel. Refer to page 9 of your Owner's Manual. Move the switch to the "AUTO" position.

### **Parental Control**

If you can not put the satellite receiver in Program Mode, the Parental Control may be on. Perform the following steps to turn off the Parental Control.

1. Press the PL RESET key two times. The on screen display reads, "PL CHANNEL LIST."
2. If any asterisks (\*) appear next to any channel numbers, continue pressing the PL RESET key until they all disappear.
3. Press VIEW. Parental lock is now off.

After performing the desired programming, you may wish to re-enable the Parental Control:

1. Confirm the receiver is in the Auto Mode.
2. Select the satellite that has channels to be locked out.
3. Select the channel to be locked out.
4. Press the PL SET key. The on screen display reads, "PARENTAL LOCK SET."
5. Repeat steps 2 through 4 for each channel to be locked out.

To view the list of locked out channels:

1. Press the PL SET key two times. An asterisk (\*) indicates each locked out channel.
2. Press VIEW to exit this list.

### **Satellite Memory Realignment**

If all satellites are misaligned in the same direction and by the same amount, the dish has most likely been shifted by high winds or other force. This function allows you to realign your dish to match the already stored satellite positions without having to reprogram or fine tune all of the satellites individually.

Use this function **ONLY** if all of your satellites are misaligned in the same direction (east or west) and by the same amount.

1. Call up or move to a satellite you are familiar with.
2. Choose a known active channel on that satellite. Use a channel easy for you to identify, though the picture may be poor or missing.
3. Press FUNCTION.
4. Select No. 3, Realign Satellite Memory. The name of the satellite and the channel is displayed. Verify these are what you chose in steps 1 and 2.
5. Use the EAST and WEST keys to obtain a good, clear picture that matches the satellite and channel you chose.

## **TRX 80**

6. If this is the correct satellite and channel, press ENTER. The entire satellite memory has been realigned to your dish.
7. Call up other satellites and verify they are aligned correctly. Repeat the above steps, if necessary.

If you must frequently realign the satellite memory, there may be problems with your out door unit. Contact your local satellite dealer/installer for assistance.

### **Missing Odd or Even Channels**

If you are missing the odd or even known active channels on any or all satellites, perform the following steps.

1. Move to the satellite with missing channels. Select the missing channel.
  - a. If the picture is black, the problem may be a missing subscription channel. Refer to the “Missing Subscription Channel” flowchart near the end of this booklet.
  - b. If the picture is scrambled or very snowy, continue with step 2.
2. Turn off the Parental Control.
3. Check the Receiver’s Input Mode. Locate the Receiver Input Mode Switch on the receiver back panel. Refer to page 9 of your Owner’s Manual. Move the switch to the “C & Ku” position.
4. Go through the channels. If this solved the problem, you are done.
5. If this did NOT solve the problem, put the Input Mode switch back to its original position and continue to step 6.
6. Perform the Skew Adjustment. Refer to page 34 of your Owner’s Manual.
  - a. Put the receiver in Program Mode. Locate the Receiver Mode Switch on the receiver back panel. Refer to page 9 of your Owner’s Manual. Move the switch to the “PROGRAM” position.
  - b. Press FUNCTION.
  - c. Select No. 2, Adjust Skew. Write down the current Skew Angle number. You may need to reset this.
  - d. Use the EAST and WEST keys to run the Skew Angle all the way down to zero and all the way up to 65.
  - e. If the picture does NOT come in clear somewhere in this range, set the skew number back to what it was in step 6.c. Press ENTER and put the receiver back in Auto Mode. Locate the Receiver Mode Switch on the receiver back panel. Refer to page 9 of your Owner’s Manual. Move the switch to the “AUTO” position. Then proceed to step 7.
  - f. If the picture DOES come in clear somewhere in this range, adjust the skew for the best picture. Press ENTER.
  - g. View the other channels on this satellite.
  - h. If all the channels are now OK, put the receiver back in Auto Mode. Locate the Receiver Mode Switch on the receiver back panel. Refer to page 9 of your Owner’s Manual. Move the switch to the “AUTO” position. You are done.
  - i. If all the channels are NOT OK, repeat the above steps to adjust the skew to what it was in step 6.c. Proceed to step 7.
7. Check the polarization wires. Refer to page 9 of your Owner’s Manual. At the bottom of the page is a picture of the back panel of your receiver. Locate terminals number 10, 11, and 12. Check the connections in these terminals.

## **TRX 80**

8. The wires are usually colored red in 10, white in 11, and black in 12. Reconnect any loose wires. Check all the channels again. If this solved the problem, you are done. If not, proceed to step 9.
9. The problem is likely the polar rotor, at the out door unit. Contact your satellite dealer/installer for assistance.

### **Initial Set Up**

Initial Set Up was performed during the original system installation and should not have to be repeated. However, if the receiver has been removed for repair or major repairs have been made to the out door unit, the Initial Set Up should be repeated.

1. Put the receiver in Program Mode. Locate the Receiver Mode Switch on the receiver back panel. Refer to page 9 of your Owner's Manual. Move the switch to the "PROGRAM" position.
2. Check the Actuator wiring. Confirm that when the EAST key is pressed, the dish moves to the east. If not, reverse the connections on M1 and M2 on the rear panel of the receiver. Check again.
3. Set the Input Mode. Locate the Receiver Input Mode Switch on the receiver back panel. Refer to page 9 of your Owner's Manual. Select the mode which is correct for your system. The majority of systems are "C & Ku." If you are not sure, contact your local satellite dealer/installer for assistance.
4. Clear all data memory. CAUTION. This will clear all the receiver memory. This is necessary only when an Initial Set Up is required.
  - a. Press FUNCTION.
  - b. Select No. 7, All Data Clear.
  - c. Select No. 1, Yes.
  - d. Press ENTER. The receiver's memory has been cleared.
5. Set the Antenna limits.
  - a. Press and hold the EAST key until the screen displays, "No Return Pulse." To avoid possible damage to the actuator or other out door components, have an assistant near the dish to warn you when the dish is reaching its limit.
  - b. Release the EAST key when the "No Return Pulse" message is displayed.
  - c. Press and hold the WEST key for about 1 to 2 seconds.
  - d. Press ENTER. The receiver front panel displays, "EL."
  - e. Press and hold the WEST key until the screen displays, "No Return Pulse." Have your assistant watch the dish to avoid any damage as the dish moves towards its western limit.
  - f. Release the WEST key when the "No Return Pulse" message is displayed.
  - g. Press and hold the EAST key for about 1 to 2 seconds.
  - h. Press ENTER. The receiver front panel displays, "WL." The antenna limits set up is complete.
6. Program the satellite positions. Refer to a current Satellite Television Guide. Locate the satellite channel chart pages. This chart shows you where the satellites are and what channels are active. Since the dish is at its West Limit, start with the furthest west satellite. At the time this booklet was written, that was Satcom C1 (F1).
  - a. Turn on the Channel Scan.
    - 1) Press FUNCTION.
    - 2) Select No. 6, Channel Scan.

## TRX 80

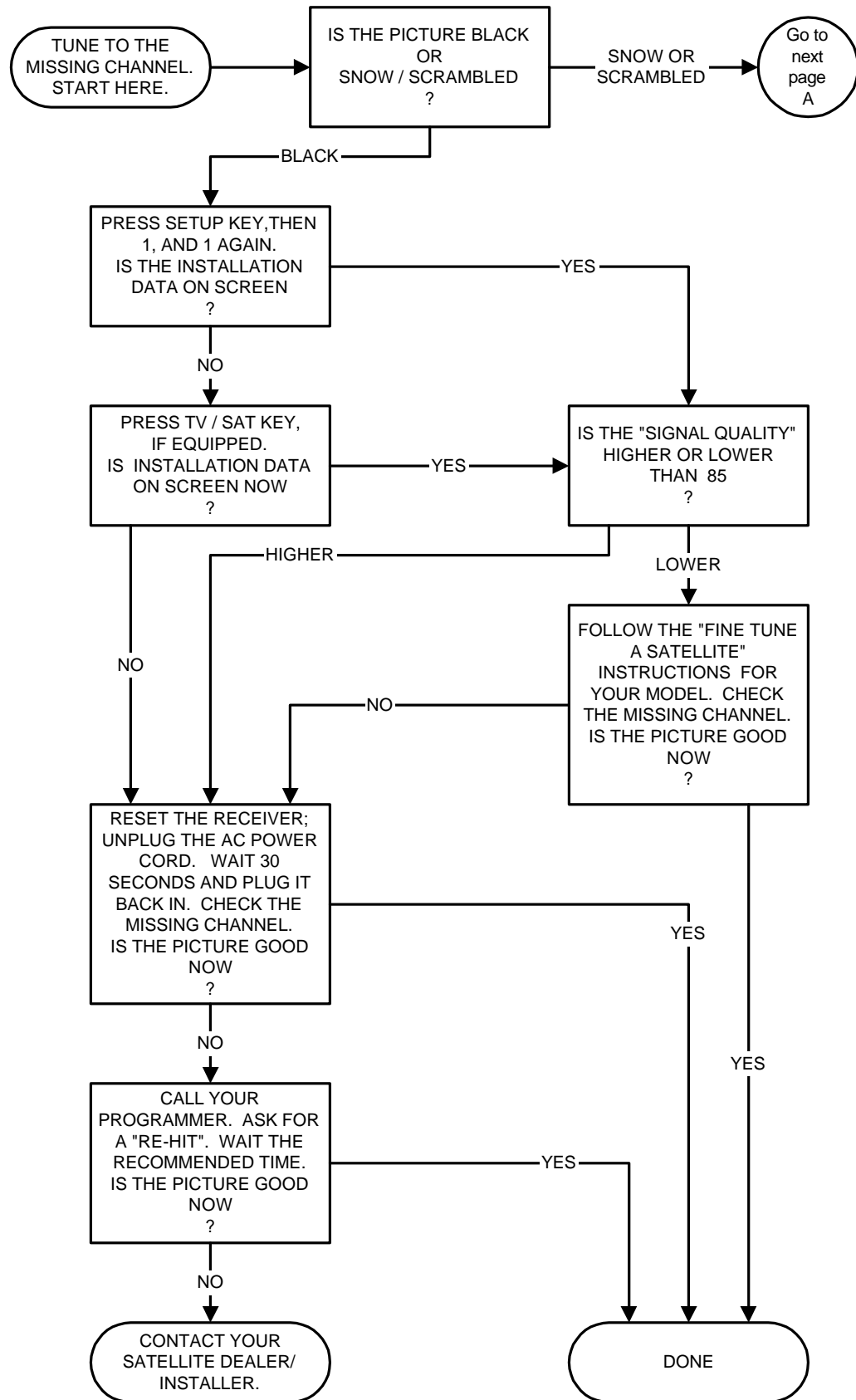
- 3) Select No. 1, ON.
- 4) Press ENTER.
- b. Turn on the Auto Tuning.
  - 1) Press FUNCTION.
  - 2) Select No. 5, Auto Tuning.
  - 3) Select No. 1, ON.
  - 4) Press ENTER.
- c. Press and hold the EAST key for 2 to 3 seconds. Allow the receiver to scan through the channels. The channel scanning will stop on a strong video signal. Press and hold the EAST key for another 2 to 3 seconds. Allow the receiver time to scan through all the channels again. Repeat short east moves until the receiver locks on a channel. The picture may be snowy or scrambled.
- d. Use the Channel UP or DOWN keys to view other channels. The receiver may start scanning again. Wait until it stops scanning. Identify any active channel on this first satellite. You may need to use the EAST or WEST keys a little to get a clear enough picture.
- e. When you are sure this is the desired satellite, press the C-SAT key (or Ku-SAT, if a Ku Satellite), followed by the alphanumeric name. (In this example, Satcom C1 can be called C 1 or F 1.)
- f. Press ENTER. The receiver automatically fine tunes the new satellite position. The “Auto-SKEW” and “Auto-ANT.” messages flash on screen. The flashing stops when the process is complete.
- g. Repeat steps 6.c through 6.f for each satellite in turn, moving eastward, until you have entered all the desired satellites. When the last satellite has been entered, the receiver must be put back in Auto Mode.
- h. Put the receiver back in Auto Mode. Locate the Receiver Mode Switch on the receiver back panel. Refer to page 9 of your Owner’s Manual. Move the switch to the “AUTO” position.

### Main Functions List TRX 80

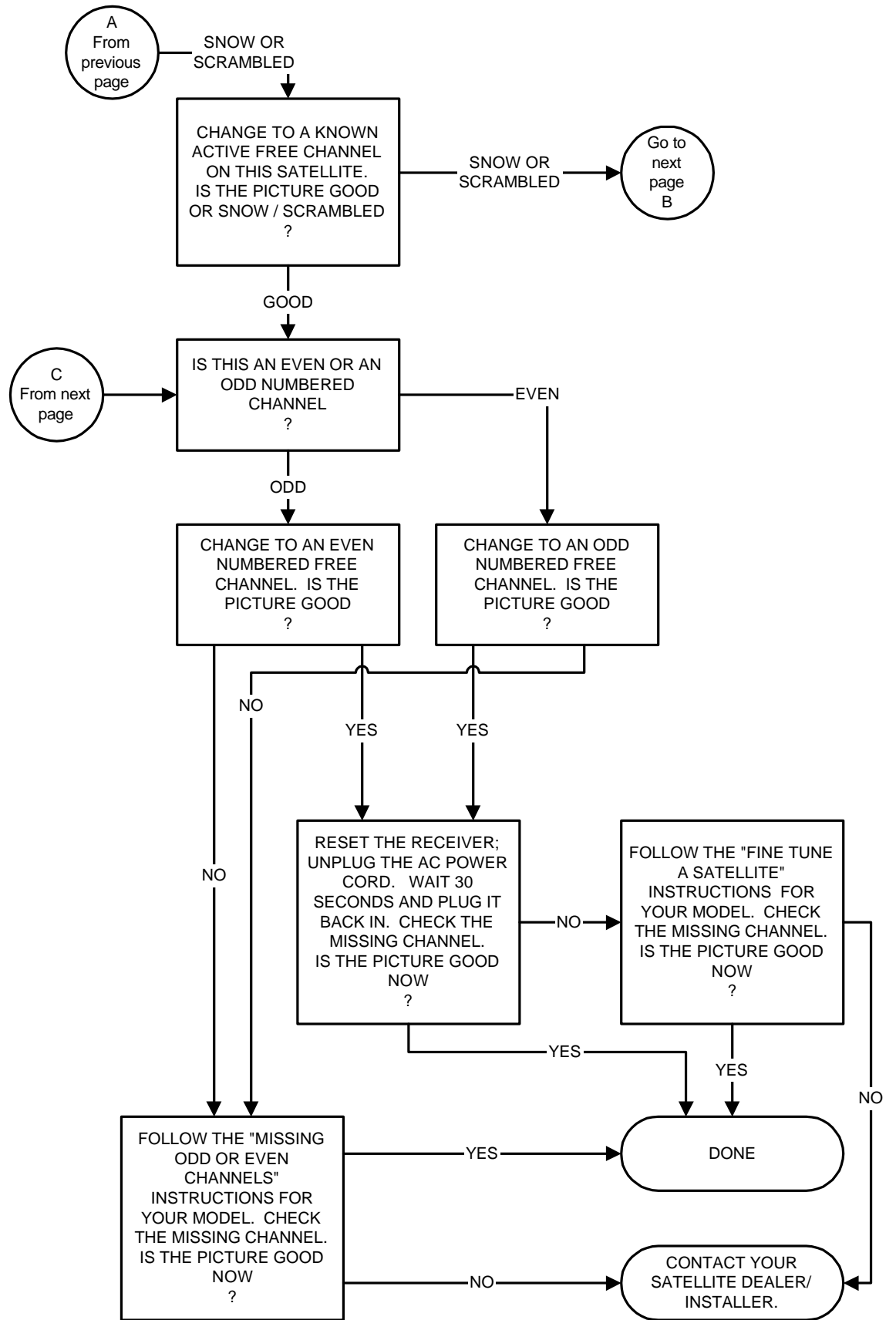
PROGRAM MODE	AUTO MODE
<ol style="list-style-type: none"> <li>1. CHANGE POLARITY</li> <li>2. ADJUST SKEW</li> <li>3. CHANGE ANTENNA LIMIT</li> <li>4. KU-BAND CHANNEL CALIBRATION</li> <li>5. AUTO TUNING ON/OFF</li> <li>6. CHANNEL SCAN ON/OFF</li> <li>7. ALL DATA CLEAR</li> </ol>	<ol style="list-style-type: none"> <li>1. CHANGE POLARITY</li> <li>2. ADJUST SKEW</li> <li>3. REALIGN SATELLITE MEMORY</li> <li>4. CHANNEL FINE TUNING</li> <li>5. FAVORITE PROGRAM ENTER/CANCEL</li> <li>6. ANTENNA MOVE BLANK ON/OFF</li> <li>7. BASIC ON SCREEN DISPLAY ON/OFF</li> </ol>

To access any of the functions, put the receiver into the desired mode (Auto or Program), then press the FUNCTION key. If you can not access the Program Mode, you must disable the Parental Control.

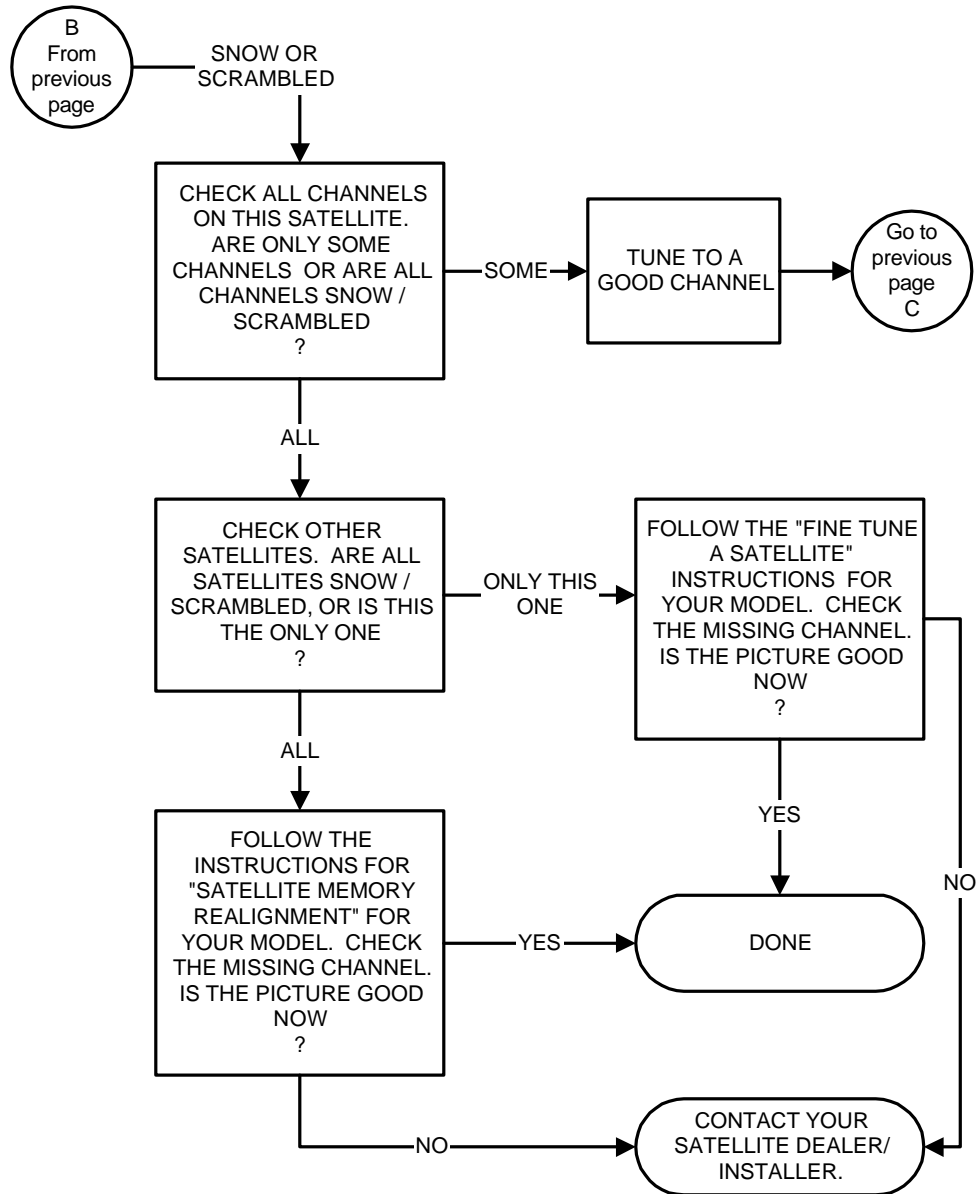
# MISSING SUBSCRIPTION CHANNELS, 1



# MISSING SUBSCRIPTION CHANNELS, 2



# MISSING SUBSCRIPTION CHANNELS, 3





## **QUICK REFERENCE TROUBLESHOOTING GUIDE**

- Problem: **Missing pay channels or missing any channel.**  
Solution: See the "Missing Subscription Channels" flow chart.
- Problem: **Strange computer type graphics appear on all pay channels, resulting in no video or audio.**  
Solution: Reset the receiver. Unplug the AC power cord, wait 30 seconds , and plug it back in.
- Problem: **Cannot access setup menu for VideoCipher module.**  
Solution: See the "Missing Subscription Channels" flow chart.
- Problem: **Cannot authorize VideoCipher module for Pay Per View (PPV).**  
Solution: Check signal quality on that channel. Check telephone jack and cable by connecting a regular telephone. If these are OK, do a receiver reset and try again to authorize.
- Problem: **Forgot your ratings ceiling or purchase passwords.**  
Solution: Call your program provider or the **Satellite Video Center at 1-800-54-VIDEO.**
- Problem: **Cannot put the receiver in Program Mode.**  
Solution: Confirm the Parental Control is off. See the "Parental Control" instructions for your model receiver.
- Problem: **Forgot your receiver's parental control password.**  
Solution: Call our Customer Service at 1-800-631-3811.
- Problem: **The receiver will not accept any new satellite names.**  
Solution: The receiver's memory may be full. Push the "C-SAT" key two times to see a list of programmed satellites. Delete some old or unwanted satellite names. See "Delete A Satellite" instructions for your model receiver.
- Problem: **Unusual operation and loss of function control.**  
Solution: Reset the receiver. Unplug the AC power cord, wait 30 seconds, and plug it back in.
- Problem: **The receiver is responding poorly or intermittently to your UHF controls.**  
Solution: See the "Troubleshooting The UHF Remote Control" on the next page.

**See your Owner's Manual for additional troubleshooting hints.**

If the tips in this operations and troubleshooting video and booklet do not help solve your problem, please consult your local satellite Dealer/Installer. Look in your local telephone directory under SATELLITE, or call the C Band Industry Group at:

**1-877-CBANDTV (1-877-222-6388)**

for assistance in locating your nearest C band Satellite Dealer/Installer.

## **TROUBLESHOOTING THE UHF REMOTE CONTROL**

If you are experiencing problems with poor range or intermittent operation of your UHF remote control, try the following steps.

1. Put new batteries in the remote control.
2. Check that the UHF antenna is securely fitted on the remote sensor connector on the back panel of the satellite receiver.
3. Check for possible UHF noise or interference in the your receiver's environment. Do a Remote Sensor test. The steps are different for each model receiver. Refer to your owner's manual.
4. If this test indicates interfering noise is present, try the following remedies.
  - A. While watching the Remote Noise display, unplug surrounding equipment, one piece at a time. If the noise suddenly disappears when a certain piece of equipment is unplugged, you have located the offending source of the interference.
  - B. Relocate the offending noise source or relocate the Receiver's UHF antenna.
  - C. To relocate the antenna, connect a short piece of coaxial cable to the remote sensor connector on the receiver back panel. Connect the antenna to the other end of this cable. You may need a barrel connector. Move the antenna to various locations, while watching the Remote Noise display.
  - D. Permanently mount the antenna in the best location.
5. Put the receiver back in AUTO MODE when you are finished.

For help locating your nearest Satellite Dealer/Installer, the C Band Industry Group may be able to help you. Call toll free at **1-877-CBANDTV** (1-877-222-6388) or visit their web site at **www.cbandtv.com**.

For Toshiba America Consumer Products Customer Service Center, call **1-800-631-3811**. Visit our web site at **www.toshiba.com**.