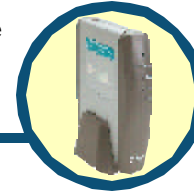


# D-Link Quick Installation Guide

This product contains drivers that work with the following operating systems: **Windows XP**, **Windows 2000**, and **Windows Me**



**DCM-201**  
D-Link Cable Modem

## Before You Begin

Decide which setup mode (Ethernet NIC or USB) you want to use and follow the installation process for that setup mode.

### Local Cable Network Service

Before installing the cable modem, contact your local cable service provider to check the availability of Internet/Cable network access. Read this Quick Installation Guide thoroughly before attempting to install the cable modem.

## Check Your Package Contents

These are the items included with your DCM-201 purchase:



**D-Link Cable Modem DCM-201**



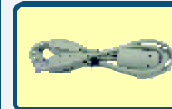
**CD-ROM (containing USB Drivers, Manual, and Warranty)**



**Ethernet (CAT5 UTP/Straight Through) Cable**



**Device Stand**



**USB Cable**



**12V DC, 1.25A Power Adapter**

If any of the above items are missing, please contact your reseller.

©2003 D-Link Systems, Inc. All rights reserved. Trademarks or registered trademarks are the property of their respective holders. Software and specifications subject to change without notice. DCM-201.05052003

# 1 Requirements

RF coaxial cable:

- One section of coaxial cable if you are not using a cable line-splitter.
- Three sections of coaxial cable if you are using a cable line-splitter.
- A cable line-splitter, if you wish to connect the cable modem and a television to the same wall cable outlet (optional).
- An active two-way cable line installed by your local cable operator.



Please contact your local cable company and subscribe to cable modem service and register this cable modem on their network. The Cable Internet provider will need the following modem information

- **Modem Make and Model** i.e. D-Link DCM-201
- **Modem Serial Number** i.e. 202102XXXXXXX (normally found on the label on the bottom of the modem)
- **Modem MAC (CMAC) Address** i.e. 0050BAXXXXXX (found on the rear of the modem)

Computer System Requirements:

- Pentium processor equivalent (Pentium 166MHz or higher recommended).
  - The original Windows Operating System CD-ROM or diskettes.
  - TCP/IP protocol installed (see the "Configuring the TCP/IP Protocol on Your PC" section for more information about TCP/IP installation).
  - An active Ethernet port or network interface card (NIC) installed in your computer.
- The cable modem is OS-independent and can be connected to any computer equipped with an active standard RJ-45 10BaseT Ethernet port.

For USB connectivity:

- A computer must have Windows XP, 2000, or ME operating system.
- An active USB port on your computer.

For Ethernet connectivity:

- A PC running Windows, Macintosh, or Linux operating system.
- An active Ethernet adapter installed in your computer such as the DFE-530TX+

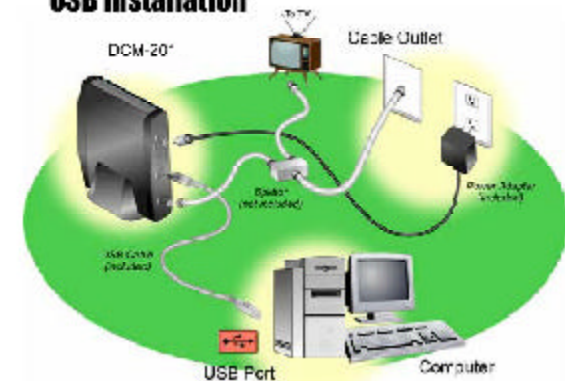


The DCM-201 USB/Ethernet Cable Modem will work only with the Ethernet port **and/or** the USB port connected.

# 2 USB Installation Process (optional)

The USB connection can only be used for computers running Microsoft Windows XP, 2000, or ME

## USB Installation



## Connect the Cables and Power Adapter

To use the computer's USB interface to connect to the Internet, use the provided USB cable to connect the computer and the cable modem.

- A. Power off the computer.
- B. Unplug the computer's power cable.
- C. Connect the RF coaxial cable (not included) to the back of the cable modem labeled "CATV", connect the other end to the wall cable outlet.

**Note:** If you are using a cable line-splitter (not included) to connect the computer and a television to the same wall cable outlet, you will use three lengths of coaxial cable. As shown in the Ethernet NIC illustration (see above), a cable line-splitter has three connectors. Use the illustration to make the appropriate coaxial cable connections.

- D. Plug the USB cable into the cable modem's USB port and the other end of the cable to the computer's USB port.
- E. Connect the 12VDC/1.25A power adapter to the back of the cable modem labeled "Power".



Be sure to use only the 12VDC/1.25A power adapter that came with the cable modem. Using the wrong power adapter can damage the cable modem.

- F. Plug the power adapter into a surge protector or an electrical outlet.
- G. Power on the computer. Within a few minutes, the computer detects the cable modem.

## 2 USB Installation Process (optional)

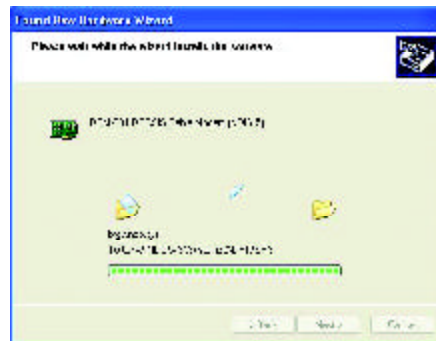
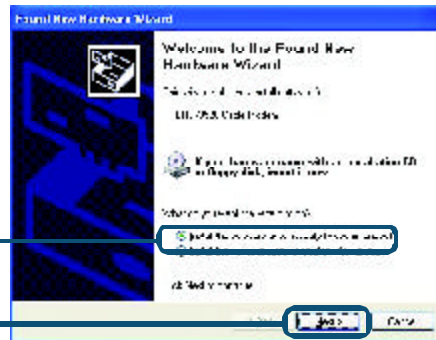
**!** If the D-Link DCM-201 Welcome screen appears, click **Close** to return to the cable modem installation process. Leave the CD in the CD-ROM drive so that Windows can access the software driver files required for the USB adapter.

Windows XP: The Found New Hardware Wizard screen appears.

Select **Install the Software Automatically (Recommended)**

Select **Install the software automatically (Recommended)**

Click **Next**



## 2 USB Installation Process (optional)

- B. When the **Found New Hardware Wizard** completes the installation, click **Finish**.
- C. You can now go to “**Check the LEDs**”.

Click **Finish** to finalize the installation.



Windows 2000: The Found New Hardware Wizard screen appears.

- 1 Insert the D-Link Installation and Documentation CD into the computer's CD-ROM drive.
  - a Shut down the computer.
  - b Connect the USB cable between the DCM-201 and an available USB Port on the computer.
- 2 Power on the computer. After the computer boots up:
  - a Windows detects the cable modem.
  - b The *Found New Hardware* screen appears.
  - c The *Found New Hardware Wizard* screen appears.
- 3 Select *Search for a suitable driver for my device* (recommended) and click **Next**.
- 4 Check the *CD-ROM Drives* check box and click **Next** to search for the necessary driver files.
- 5 When the correct location of the driver file appears, click **OK**.
- 6 The *Found New Hardware Wizard* displays the search results.
- 7 Click **Next** to install the driver files for the cable modem.
- 8 Click **Finish** to continue.
- 9 The *Found New Hardware Wizard* screen appears.
- 10 Select *Search for a suitable driver for my device* (recommended) and click **Next**.
- 11 Check the *CD-ROM Drives* check box and click **Next** to search for the necessary driver files.
- 12 When the correct location of the driver file appears, click **OK**.
- 13 The *Found New Hardware Wizard* displays the search results.
- 14 Click **Next** to install the driver files for the cable modem.
- 15 Click **Finish**.

Windows ME The **Add New Hardware Wizard** screen appears.

- A. Select **Automatically search for a better driver (Recommended)** and click **Next**.
- B. When Windows locates the driver files click **Next** to install the necessary files.
- C. Click **Finish**. The system **Settings Change** dialog box appears.
- D. Click **Yes** to reboot your computer.
- E. You can now go to “**Check the LEDs**”.

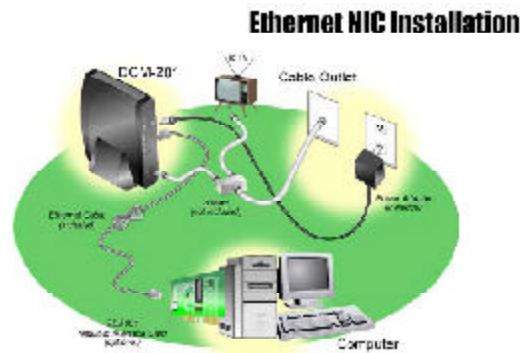
## 2 USB Installation Process (optional)

### Install the USB Software Drivers

When the computer detects the cable modem, insert the D-Link Installation and Documentation CD into the computer's CD-ROM drive and follow the on-screen prompts to install the necessary driver files. Follow the instructions for your specific operating system.

## 3 Ethernet Installation Process

The Ethernet connection is OS-independent and can be used to connect any computer that has a pre-installed Ethernet adapter.



### Configure the TCP/IP Protocol on Your PC

Before installing the cable modem in the Ethernet mode, you must verify that your computer has the TCP/IP protocol installed. Follow the procedure for your computer's operating system to verify or install the TCP/IP protocol.

#### Windows 95, Windows 98, or Windows ME Operating System:

- Click **Start**, point to **Settings**, and then click **Control Panel**.
- Double-click the **Network** icon. The screen displays a list of installed network components.
- Search for an entry containing TCP/IP, followed by the NIC hardware device installed in your computer. If you see TCP/IP listed next to your Ethernet hardware device, you may now go to "**Install the Cable Modem**".

## 3 Ethernet Installation Process

If TCP/IP is NOT listed, you must complete the following steps:

1. Click **Add**.
  2. Click **Protocol**, and then click **Add**.
  3. Click **Microsoft** in the "Manufacturers" list and then click the "**Network Protocols**" list.
  4. Click **OK**. You are prompted to restart your computer.
- D. Click **Yes**. You can now go to "**Install the Cable Modem**".

#### Windows XP or 2000 Operating System

- A. Right-click **My Network Places** icon on the Windows desktop.
- B. Right-click **Local Area Connection** and click **Properties**. Search for an entry containing TCP/IP. If you see TCP/IP listed next to your Ethernet hardware device, you can now go to "**Install the Cable Modem**".

#### Install the Cable Modem

Refer to the Ethernet NIC illustration (previous page) when making the following connections:

- A. Power off the computer.
- B. Unplug the computer's power cable.
- C. Connect the RF coaxial cable (not included) to the back of the cable modem labeled "CATV", connect the other end to the wall cable outlet.

**Note:** If you are using a cable line-splitter (not included) to connect the computer and a television to the same wall cable outlet, you will use three lengths of coaxial cable. As shown in the Ethernet NIC illustration (see previous page), a cable line-splitter has three connectors. Use the illustration to make the appropriate coaxial cable connections.

- D. Connect one end of the Ethernet cable to the cable modem labeled "ETH" and the other end to the Ethernet NIC installed on your computer.
- E. Connect the 12VDC/1.25A power adapter to the back of the cable modem labeled "Power".



Be sure to use only the power adapter that came with the cable modem. Using the wrong power adapter can damage the cable modem.

- F. Plug the power adapter into a surge protector or an electrical outlet.
- G. Plug in power cable and turn on the computer.
- H. Verify that the proper LED lights are correctly showing on the DCM-201.

# 4

## Check the LEDs

After installation is complete, the cable modem is operating properly if the Power, Cable and Status LED lights are solid green

LED LABEL	COLOR	DESCRIPTION
Power	Green	Cable modem is plugged in to an electrical outlet and is receiving power
Cable	Orange-Blinking	The modem is searching for the DOWNSTREAM frequency
	Orange	DOWNSTREAM frequency is locked. Searching for UPSTREAM frequency
	Green	UPSTREAM frequency is locked
Status	Green-Blinking	Modem is registering with the cable company's head-end
	Green	Modem is ready for data transfers
ETH	Green	Valid Ethernet link status
	Green-Blinking	Cable modem is transmitting/receiving data through the Ethernet port
USB	Green	USB interface is connected
	Green-Blinking	Data is being sent/received through the USB port

## Appendix

### Product Specifications

Dimensions: 142 x 120 x 30mm

5.6 x 4.7 x 1.2in

Net Weight: 345g +/- 10g (0.76lb)

DC Input Voltage: 12VDC/1.25A

Power Dissipation (Max): 8 Watts

Operating Temperature: 0° C ~ 40° C

32° C ~ 104° F

Operating Humidity: 10%~90%

Cable Network Interface: F Type RF Connector

LAN Access Point: 10/100 Mbps Ethernet MAC

USB Interface (Max): 12Mbps

DOWNSTREAM transmission speed (MAX): 38Mbps

UPSTREAM transmission speed (MAX): 10Mbps

### Back Panel Interface

- RESET - Restores factory default settings.
- Power - Socket to connect the power adapter included in the product package.
- ETH - RJ-45 female socket for connection of Ethernet cable.
- USB - USB "B" -type socket. Connects through USB cable to a computer's USB "A" -type port.
- CATV - RF connector to attach the cable for broadband Internet access.

# Troubleshooting

If the cable modem is not working properly, please follow the procedures below to solve the problem.

1. Check to verify that all equipment is powered "ON" and the cable connections are secure.
2. Check the cable modem to see if the LED lights function properly.

## ■ Power LED not lit

Action: Check both ends of the power adapter to make certain that they are securely connected to the power jack on the cable modem and the power outlet.

If both ends of the power adapter are properly connected and there is still no power, the cable modem might have a faulty power adapter or electrical outlet. Try plugging the power adapter into a different electrical wall outlet.



Be sure to use only the power adapter that came with the cable modem. Using the wrong power adapter can damage the cable modem and will void your warranty.

## ■ Status LED is on, but the computer fails to get the IP address and cannot connect to the Internet

Possible reasons: The driver for the network interface card has not been installed or was not installed properly. Please refer to the instruction of the operating system (Windows 95, Windows 98/98SE, Windows NT, Windows 2000, Windows Me, NetWare, etc.) and the user documentation of the network interface card to have the network interface card installed properly.

In order to access the Internet through the CATV Headend, which acts as an ISP (Internet Service Provider), your computer must have the right TCP/IP setting. Set the TCP/IP setting of the network interface card to get the IP address from the ISP automatically using DHCP protocol. For more information, please contact your local cable modem service provider.

## ■ The Ethernet port LED of the connected device is not lit

Action: Check if the device being connected is powered "ON", operating correctly and properly connected. Also check if the cable is [straight-through] for an end device like a PC/notebook. If the cable will be connecting to a hub or switch port, you should use [crossed] wire instead. Make sure the connectors at both ends of the cable are securely seated. If the problems continue, it is possible that the cable you are using is not compliant with specifications, or is improperly connected or damaged.

# Troubleshooting (continued)

## ■ Cable LED is not lit or keeps blinking Orange

Possible reason: The cable modem cannot detect any carrier or valid data channel from the coaxial cable.

Action: Make sure the connectors at each end of the coaxial cable are securely seated. If the problem persists, please contact your cable modem service provider for further assistance. The quality of CATV coaxial cable and installation can affect the connection dramatically.

## ■ Cable LED not lit or stays Orange

Possible reason: The cable modem can not range the upstream signal properly with the Cable Headend system.

Action: Please make sure the connectors at each end of the coaxial cable are securely seated. If the problem still persists, contact your cable modem service provider for further assistance.

## ■ USB LED not lit

Possible reason: The USB cable is not connected properly or the USB driver is not installed properly.

Action: Check if the device being connected is powered "ON", operating correctly and properly connected. Make sure your operating system does support USB device and installed with the driver provided by D-Link Systems Inc.. Right now the supported operation systems include Windows XP, 2000, and ME.

## Technical Support

You can find software updates and user documentation on the D-Link website.

D-Link provides free technical support for customers within the United States and within Canada for the duration of the warranty period on this product.

U.S. and Canadian customers can contact D-Link technical support through our website, or by phone.

### Tech Support for customers within the United States:

#### D-Link Technical Support over the Telephone:

(877) 453-5465

24 hours a day, seven days a week.

#### D-Link Technical Support over the Internet:

<http://support.dlink.com>

[email:support@dlink.com](mailto:support@dlink.com)

### Tech Support for customers within Canada:

#### D-Link Technical Support over the Telephone:

(800) 361-5265

Monday to Friday 8:30am to 9:00pm EST

#### D-Link Technical Support over the Internet:

<http://support.dlink.ca>

[email:support@dlink.ca](mailto:support@dlink.ca)

