

D-Link Quick Installation Guide

This product can be used with the following operating systems:
Windows XP, Me, 2000, 98SE
Macintosh OS v10.1



DUB-C2
2-Port USB 2.0
Cardbus Adapter

Before You Begin

You must have at least the following:

- Windows XP/Me/2000/98SE or Macintosh OS v10.1
- Pentium Class CPU or Higher
- One Available 32-bit Cardbus Slot
- CD-ROM Drive

Check Your Package Contents

These are the items included with your purchase:

If any of the below items are missing, please contact your reseller.



- DUB-C2 Hi-Speed USB 2.0 Notebook Cardbus Adapter



- CD-ROM (containing Drivers, Installation Guide and Warranty)



Windows Users

Run the Driver CD before you install the DUB-C2.

The Driver CD contains an installation program that significantly simplifies your installation process.

1

Insert the D-Link CD-ROM Into Your Computer

Mac users please proceed to the last section of this guide.

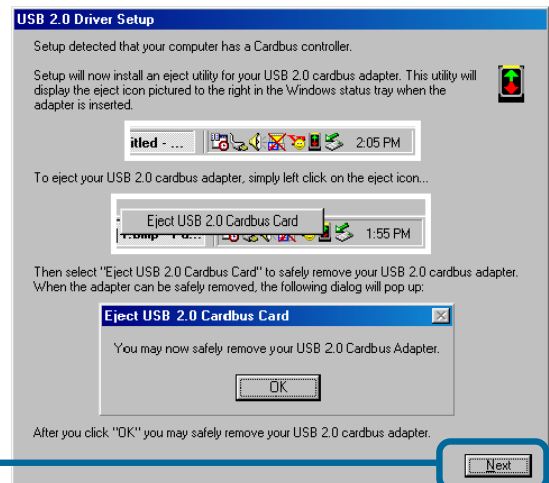
Turn on your computer and insert the **D-Link DUB-C2 Driver CD** in the CD-ROM drive.

Click **Install Driver**



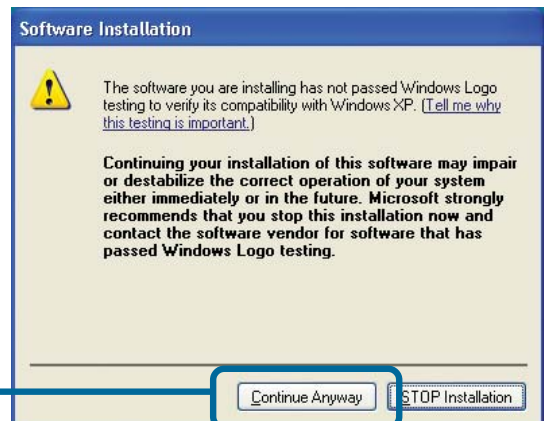
If the Autorun screen does not automatically start, click on **Start > Run**, enter "**D:\Autorun.exe**" and click **OK**. "**D**" represents the letter of your CD-ROM drive. Replace it if your CD-ROM drive is a different letter.

Only **Windows 98** users will see this screen.



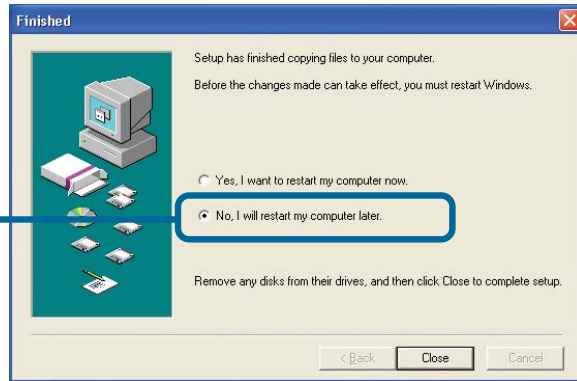
Click **Next**

Only **Windows XP** users will see this screen.



Click **Continue Anyway**

Select **No** and
Shut Down Your
Computer



2 Installing The DUB-C2 USB 2.0 Cardbus Adapter Into Your Computer



Make sure your computer is completely turned OFF before installing the DUB-C2.

Locate an available cardbus slot and insert the DUB-C2 into the cardbus slot.



Turn On your computer.

3 Completing The Driver Installation

Windows XP Users

Follow these steps to complete installation under Windows XP for each device that Windows prompts you to install.

The image displays three sequential screenshots of the Windows XP Found New Hardware Wizard, illustrating the steps to complete driver installation. Each screenshot is accompanied by a callout box with instructions.

Step 1: Welcome to the Found New Hardware Wizard

This wizard helps you install software for:
NEC PCI to USB Enhanced Host Controller B1

If your hardware came with an installation CD or floppy disk, insert it now.

What do you want the wizard to do?

- ☒ Install the software automatically (Recommended)
- ☐ Install from a list or specific location (Advanced)

Click Next to continue.

Click **Next**

Step 2: Hardware Installation

The software you are installing for this hardware:
NEC PCI to USB Enhanced Host Controller B1

has not passed Windows Logo testing to verify its compatibility with Windows XP. [\[Tell me why this testing is important.\]](#)

Continuing your installation of this software may impair or destabilize the correct operation of your system either immediately or in the future. Microsoft strongly recommends that you stop this installation now and contact the hardware vendor for software that has passed Windows Logo testing.

Click **Continue Anyway**

Step 3: Completing the Found New Hardware Wizard

The wizard has finished installing the software for:
NEC PCI to USB Enhanced Host Controller B1

Click Finish to close the wizard.

Click **Finish**

Windows XP Users

The image shows three sequential screenshots of the Windows XP Found New Hardware Wizard, with callouts indicating the required user actions:

- First Screenshot:** The 'Welcome to the Found New Hardware Wizard' window. It displays 'USB 2.0 Root Hub Device' and offers two options: 'Install the software automatically (Recommended)' (selected) and 'Install from a list or specific location (Advanced)'. A callout box points to the 'Next >' button with the text 'Click **Next**'.
- Second Screenshot:** The 'Hardware Installation' warning window. It states that the software has not passed Windows Logo testing and advises stopping the installation. A callout box points to the 'Continue Anyway' button with the text 'Click **Continue Anyway**'.
- Third Screenshot:** The 'Completing the Found New Hardware Wizard' window. It confirms the software is installed. A callout box points to the 'Finish' button with the text 'Click **Finish**'.

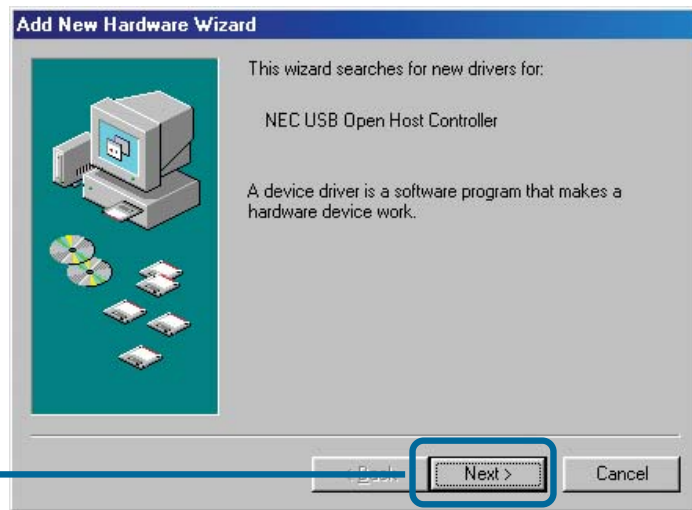
Windows 2000 & Me Users

The DUB-C2 driver installation will proceed automatically for Windows 2000 & Me users while Windows is starting.

Windows 98SE Users

Follow these steps to complete installation under Windows 98. You will have to repeat these steps twice.

Click **Next**

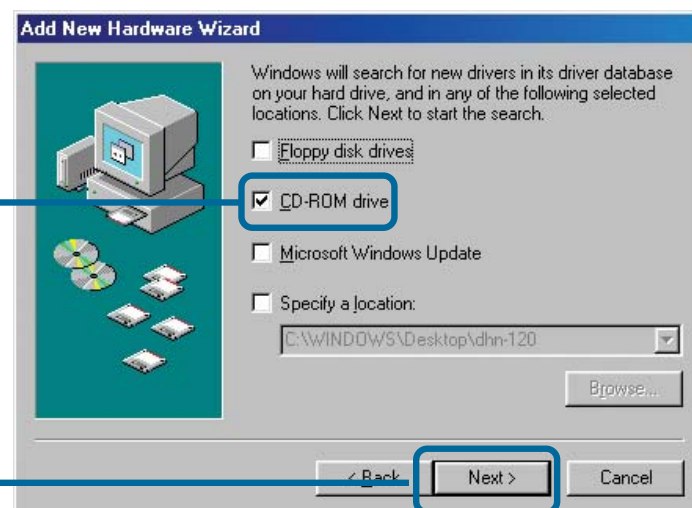


Click **Next**



Select only **CD-ROM drive**

Click **Next**



Windows 98SE Users

Add New Hardware Wizard

Windows has found an updated driver for this device, and also some other drivers that should work with this device.

What do you want to install?

- ☒ The updated driver (Recommended)
NEC USB Open Host Controller
- ☐ One of the other drivers. [View List...](#)

[< Back](#) **Next >** [Cancel](#)

Add New Hardware Wizard

Windows driver file search for the device:

NEC USB Open Host Controller

Windows is now ready to install the best driver for this device. Click Back to select a different driver, or click Next to continue.

Location of driver:

[C:\WINDOWS\INF\USB.INF](#)

[< Back](#) **Next >** [Cancel](#)

Add New Hardware Wizard

NEC USB Open Host Controller

Windows has finished installing the software that your new hardware device requires.

[< Back](#) **Finish** [Cancel](#)

Click **Next**

Click **Next**

Windows 98 may prompt you for the Windows 98 Setup disk. If prompted, insert the Windows 98 Setup disk and select **OK**.

Click **Finish**

If prompted, **Restart Your Computer** to complete the installation.

Macintosh OS X 10.1 Users

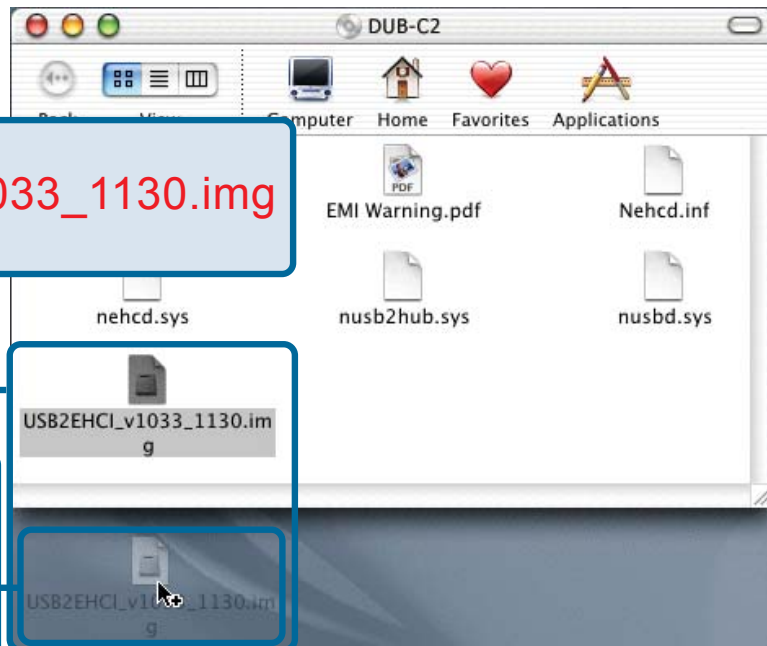
Follow these steps to complete installation under Macintosh OS X 10.1.

Insert the **DUB-C2 Driver CD**
into the CD-ROM drive.

Double-click **DUB-C2** when it
appears on the desktop



Drag-&-drop
USB2EHCI_V1033_1130.img
to the desktop

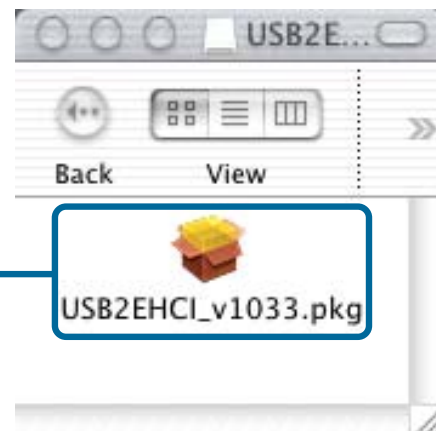


Double-click
**USB2EHCI-
V1033_1130.IMG**
from the
desktop

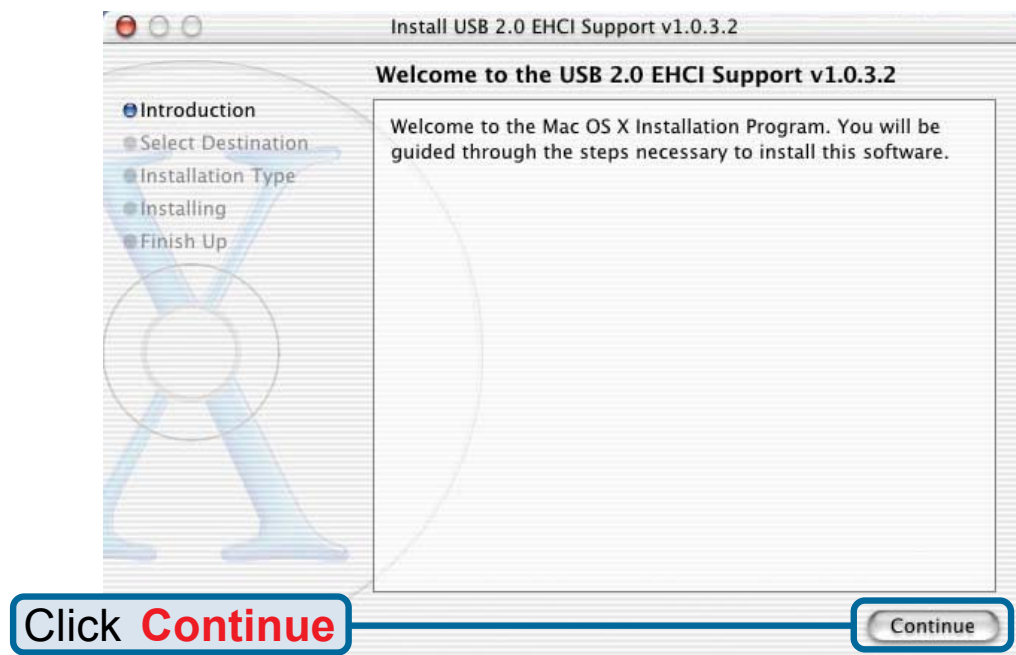
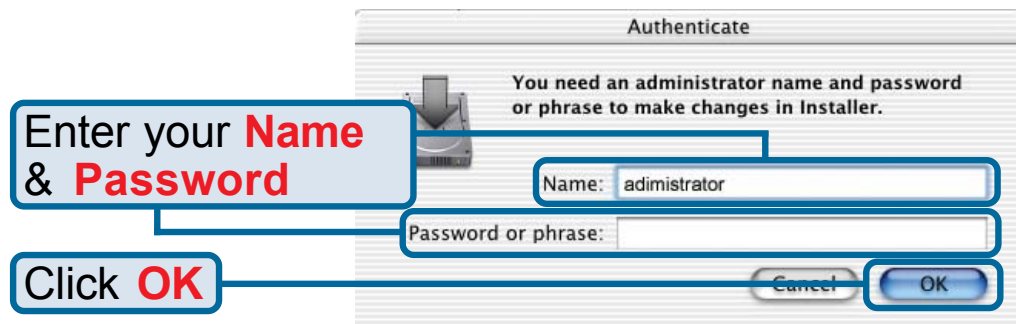
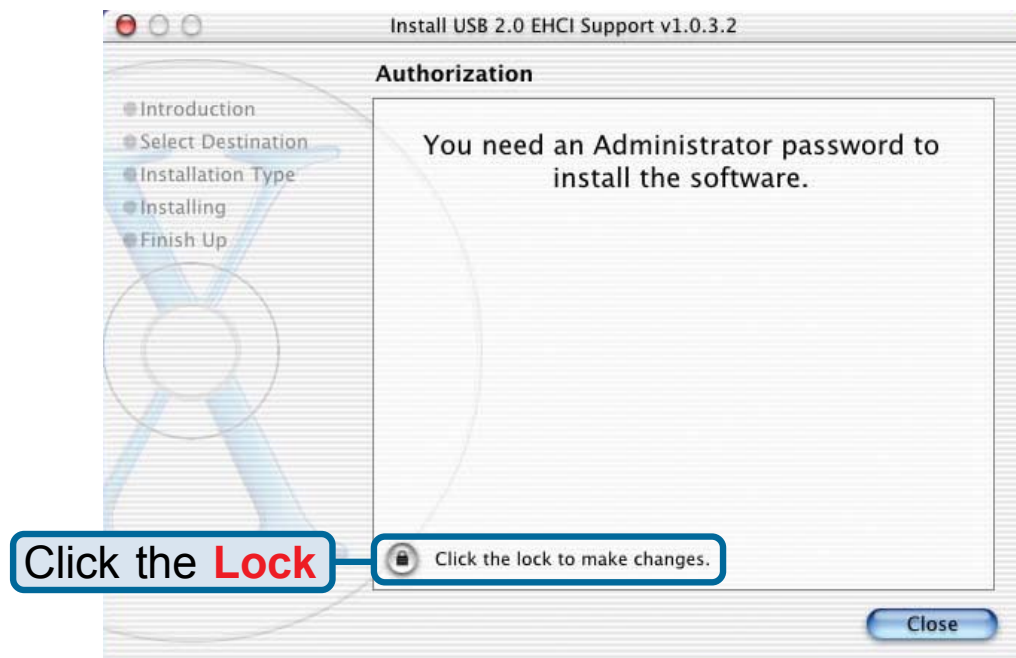
Double-click
USB2EHCI_V1033 when
it appears on the desktop



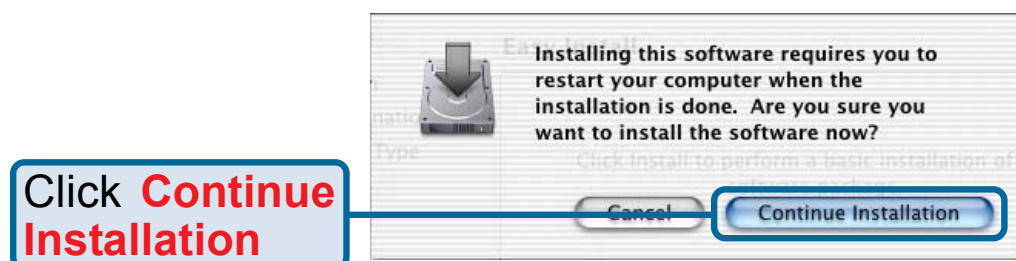
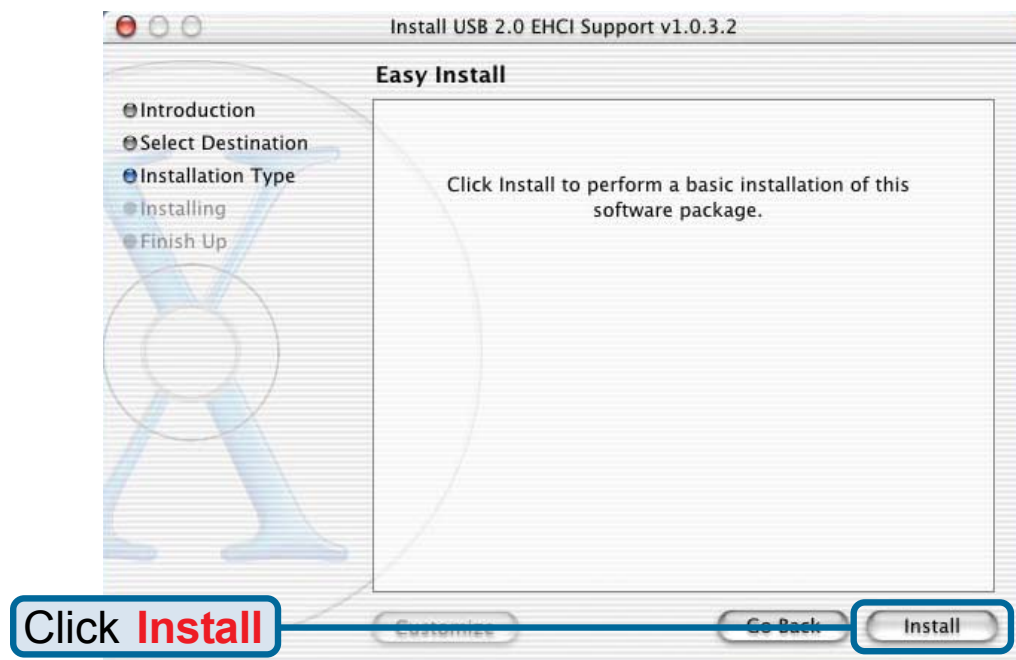
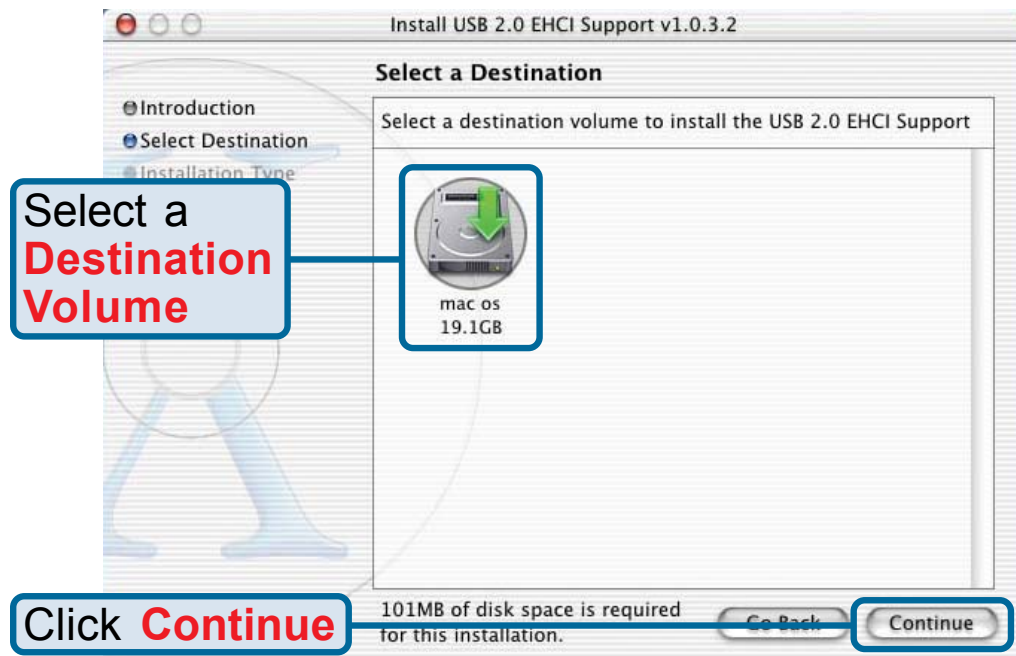
Double-click
USB2EHCI_V1033.pkg



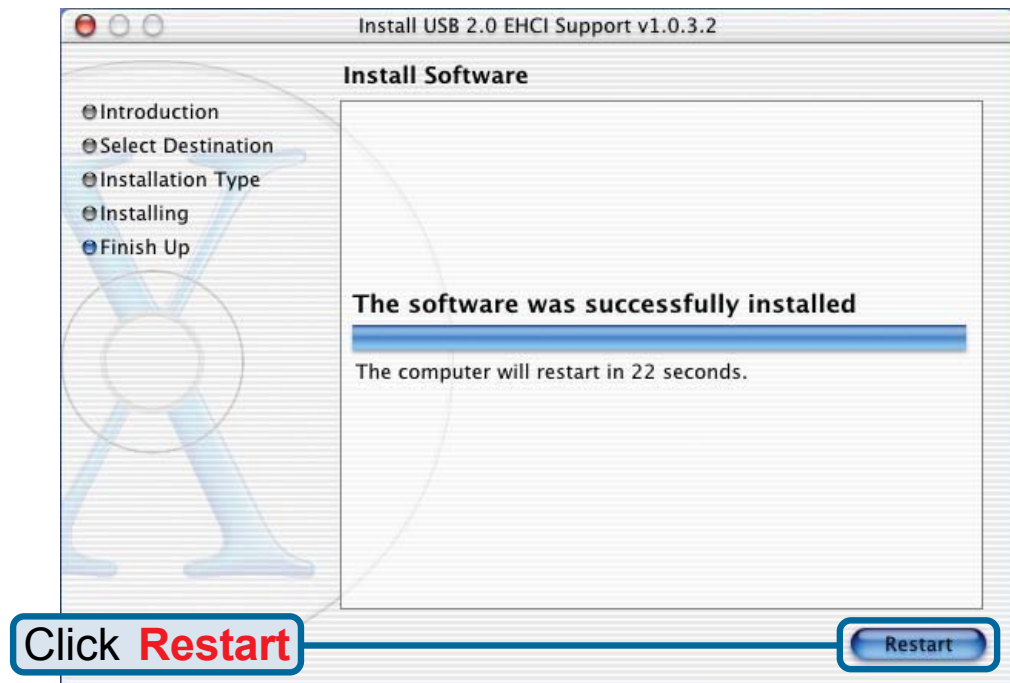
Macintosh OS X 10.1



Macintosh OS X 10.1



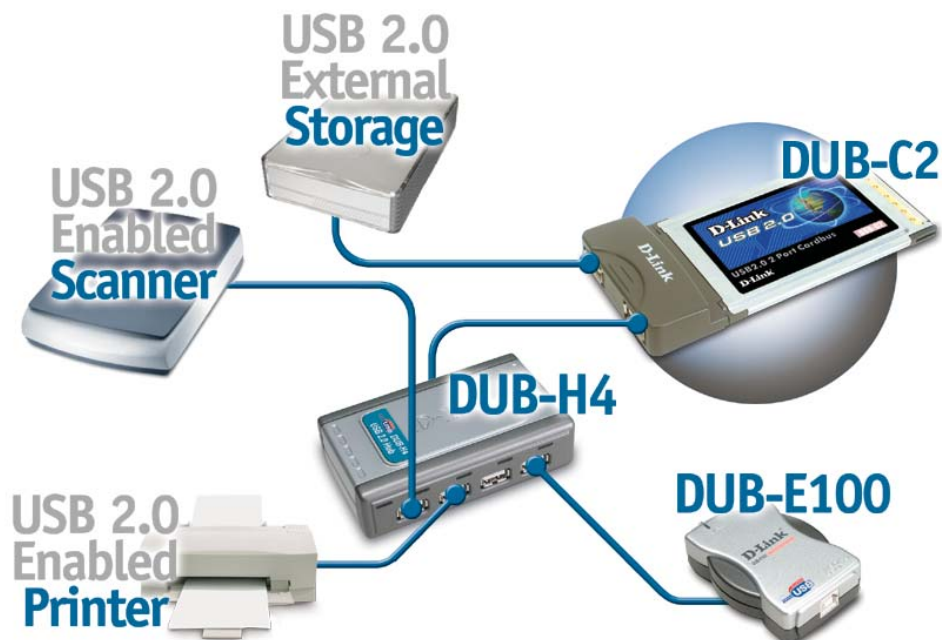
Macintosh OS X 10.1



Typical DUB-C2 Installation

Once properly installed, the **DUB-C2 Hi-Speed USB 2.0 2-Port Cardbus Adapter** can be used to connect both USB 2.0 and USB 1.1 devices to any of its two USB ports.

The diagram below shows a typical installation using the DUB-C2 and other USB devices.





Introduction to USB 2.0 and Helpful Tips

Introduction

USB stands for Universal Serial Bus. It is a standard for connecting external devices to your computer quickly and easily. One of the nice things about USB is that power can be provided to the USB device through the USB cable. However, some devices such as printers need more power than the USB ports can provide, so those devices will have to use an external power source. USB also allows the device to be connected and removed from the PC without the need to shut -down the computer.

USB 2.0 is the second generation standard that improves on USB 1.1 to provide faster and more reliable data transfers. USB 1.1's speed of 12Mbps is extended to 480Mbps in USB 2.0. The improved speed and bandwidth opens up the possibility for newfound solutions such as external backup or data storage solutions, as well as digital audio and video solutions.

One important feature of the USB 2.0 standard is that it is backward compliant with USB 1.0 and USB 1.1. This means that all of your current USB products will work with USB 2.0 adapters.

Many USB products are widely available on the market and more are being developed for future release. Because of the high speed of the USB interface, a USB hub can be used to connect more than one USB device to one USB port at one time. The USB standard specifies that up to 127 devices can be connected to your computer.

Helpful Tips

- When connecting the USB cable to the computer, make sure that the USB cable is inserted securely.
- Remember that when connecting USB 1.0 or USB 1.1 products into a USB 2.0 adapter, the USB 1x product will not work faster.
- To ensure optimal performance when using USB 2.0 devices, use a USB 2.0 certified cable such as the DUB-C5AB.
- The DUB-C2 will work in Macintosh OS 8/9 at USB 1.1 speeds using the built-in drivers for the appropriate operating system.

Technical Support

You can find the most recent software and user documentation on the **D-Link** website.

D-Link provides free technical support for customers within the United States for the duration of the warranty period on this product.

U.S. customers can contact **D-Link** technical support through our web site or by phone.

D-Link Technical Support over the Telephone:

(877) 45D-LINK

(877) 453-5465

24 hours a day, seven days a week

D-Link Technical Support over the Internet:

<http://support.dlink.com>

email: support@dlink.com

